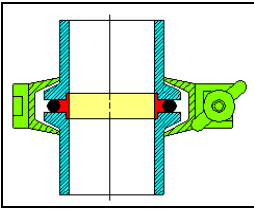


# KF Components

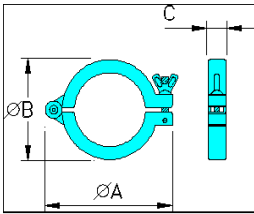


## KF INTRODUCTION



X-TRONIX Quality KF range of flanges and fittings are manufactured from high quality 316L (1.4404) stainless steel. KF flanges utilise an aluminium clamp with a single wing nut fastener allowing disassembly without tools. The vacuum seal is made by uniform application of the clamp on the 15° surface of the flange. The mating flange surfaces compress an O-ring, held in place by a centering ring, to produce a seal that can be used in vacuum applications down to  $10^{-7}$  mbar and baked to 200°C (sustained to 150°C).

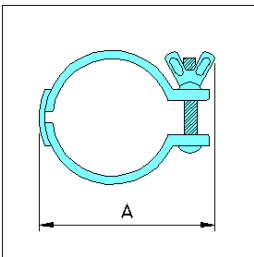
## KF CLAMPS - ALUMINIUM



Part Number	Pneurop	A	B	C	D	E
XTR16-2-0001	NW10/16	63	40	12	-	-
XTR25-2-0002	NW20/25	75	50	15	-	-
XTR40-2-0003	NW32/40	90	65	15	-	-
XTR50-2-0004	NW50	110	87	17	-	-

Pressure range  $10^{-7}$  mbar to 10 bar  
Temperature range -10 to 200°C

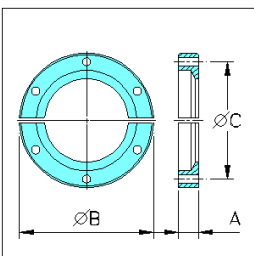
## KF CLAMPING RINGS – STAINLESS STEEL



Part Number	Pneurop	A	B	C	D	E
XTR16-2-0005	NW10/16	50	-	-	-	-
XTR25-2-0006	NW20/25	63	-	-	-	-
XTR40-2-0007	NW32/40	76	-	-	-	-
XTR50-2-0008	NW50	100	-	-	-	-

Temperature range -10 to 125°C

## KF BULKHEAD CLAMPS - ALUMINIUM

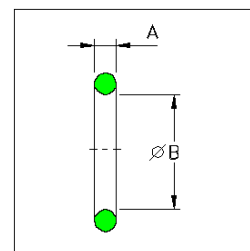


Part Number	Pneurop	A	B	C	D	E
XTR16-2-0009	NW16	9.2	50.8	38.1	-	-
XTR25-2-0010	NW25	9.8	60.3	48.0	-	-
XTR40-2-0011	NW40	9.3	74.6	62.0	-	-
XTR50-2-0012	NW50	10.3	95.2	83.0	-	-

## KF VITON® O-RINGS

Part Number	Pneurop	A	B	C	D	E
XTR10-3-0013	NW10	5	15	-	-	-
XTR16-3-0014	NW16	5	18	-	-	-
XTR25-3-0015	NW25	5	28	-	-	-
XTR40-3-0016	NW40	5	42	-	-	-
XTR50-3-0017	NW50	5	55	-	-	-

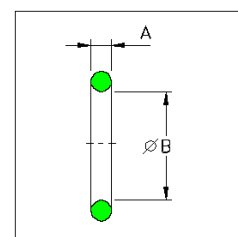
Pressure range  $10^{-7}$  mbar to 1 bar  
 Temperature range -10 to 200°C (Sustained 150°C)



## KF NITRILE O-RINGS

Part Number	Pneurop	A	B	C	D	E
XTR10-3-0018	NW10	5	15	-	-	-
XTR16-3-0019	NW16	5	18	-	-	-
XTR25-3-0020	NW25	5	28	-	-	-
XTR40-3-0021	NW40	5	42	-	-	-
XTR50-3-0022	NW50	5	55	-	-	-

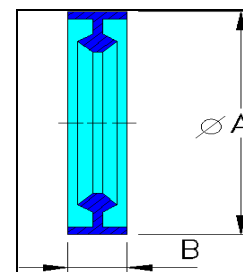
Pressure range  $10^{-7}$  mbar to 1 bar  
 Temperature range -10 to 100°C



## KF METAL SEALS - ALUMINIUM

Part Number	Pneurop	A	B	C	D	E
XTR10/16-3-0023	NW10/16	32	7	-	-	-
XTR20/25-3-0024	NW20/25	42	7	-	-	-
XTR32/40-3-0025	NW32/40	57	7	-	-	-
XTR50-3-0026	NW50	77	7	-	-	-

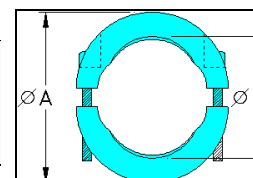
Pressure range  $10^{-6}$  mbar to 3 bar



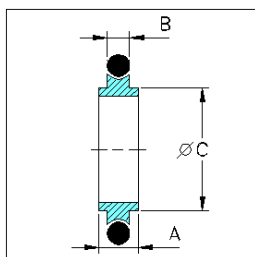
## KF METAL SEAL CLAMPS – STAINLESS STEEL

Part Number	Pneurop	A	B	C	D	E
XTR10/16-3-0027	NW10/16	54	22	-	-	-
XTR20/25-3-0028	NW20/25	64	32	-	-	-
XTR32/40-3-0029	NW32/40	82	47	-	-	-
XTR50-3-0030	NW50	112	62	-	-	-

Pressure range  $10^{-6}$  mbar to 3 bar



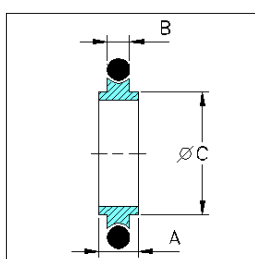
## KF STAINLESS STEEL CENTERING RINGS, VITON® O-RING



Part Number	Pneurop	A	B	C	D	E
XTR10-4-0031	NW10	8	3.9	12	-	-
XTR16-4-0032	NW16	8	3.9	17	-	-
XTR20-4-0033	NW20	8	3.9	22	-	-
XTR25-4-0034	NW25	8	3.9	26	-	-
XTR32-4-0035	NW32	8	3.9	34	-	-
XTR40-4-0036	NW40	8	3.9	41	-	-
XTR50-4-0037	NW50	8	3.9	52	-	-

Pressure range  $10^{-7}$  mbar to 1 bar  
 Temperature range -10 to 200°C (Sustained 150°C)

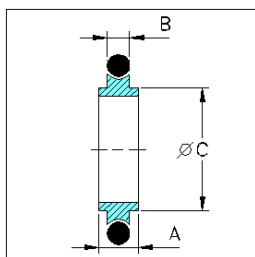
## KF STAINLESS STEEL CENTERING RINGS, NITRILE O-RING



Part Number	Pneurop	A	B	C	D	E
XTR10-4-0038	NW10	8	3.9	12	-	-
XTR16-4-0039	NW16	8	3.9	17	-	-
XTR20-4-0040	NW20	8	3.9	22	-	-
XTR25-4-0041	NW25	8	3.9	26	-	-
XTR32-4-0042	NW32	8	3.9	34	-	-
XTR40-4-0043	NW40	8	3.9	41	-	-
XTR50-4-0044	NW50	8	3.9	52	-	-

Pressure range  $10^{-7}$  mbar to 1 bar  
 Temperature range -10 to 100°C

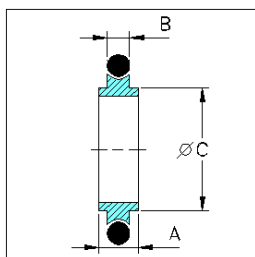
## KF ALUMINIUM CENTERING RINGS, VITON® O-RING



Part Number	Pneurop	A	B	C	D	E
XTR10-4-0045	NW10	8	3.9	12	-	-
XTR16-4-0046	NW16	8	3.9	17	-	-
XTR25-4-0047	NW25	8	3.9	22	-	-
XTR40-4-0048	NW40	8	3.9	41	-	-
XTR50-4-0049	NW50	8	3.9	52	-	-

Pressure range  $10^{-7}$  mbar to 1 bar  
 Temperature range -10 to 200°C (Sustainable 150°C)

## KF ALUMINIUM CENTERING RINGS, NITRILE O-RING



Part Number	Pneurop	A	B	C	D	E
XTR10-4-0050	NW10	8	3.9	12	-	-
XTR16-4-0051	NW16	8	3.9	17	-	-
XTR25-4-0052	NW25	8	3.9	22	-	-
XTR40-4-0053	NW40	8	3.9	41	-	-
XTR50-4-0054	NW50	8	3.9	52	-	-

Pressure range  $10^{-7}$  mbar to 1 bar  
 Temperature range -10 to 100°C

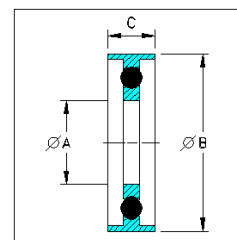
## KF TRAPPED CENTERING RINGS, VITON® O-RINGS

Aluminium outer, stainless steel inner

Part Number	Pneurop	A	B	C	D	E
XTR16-5-0055	NW16	16	31.5	8	-	-
XTR25-5-0056	NW25	25	41.5	8	-	-
XTR40-5-0057	NW40	40	56.5	8	-	-
XTR50-5-0058	NW50	50	77.5	8	-	-

Pressure range 10<sup>-7</sup> mbar to 10 bar

Temperature range -10 to 200°C (Sustained 150°C)



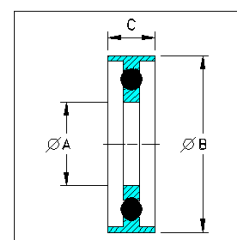
## KF TRAPPED CENTERING RINGS, NITRILE O-RINGS

Aluminium outer, stainless steel inner

Part Number	Pneurop	A	B	C	D	E
XTR16-5-0059	NW16	16	31.5	8	-	-
XTR25-5-0060	NW25	25	41.5	8	-	-
XTR40-5-0061	NW40	40	56.5	8	-	-
XTR50-5-0062	NW50	50	77.5	8	-	-

Pressure range 10<sup>-7</sup> mbar to 10 bar

Temperature range -10 to 100°C



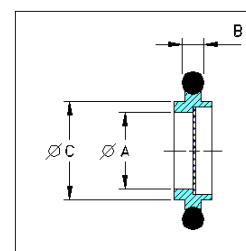
## KF MESH CENTERING RINGS, VITON® O-RINGS

Stainless steel centering ring with 72 mesh screen (0.5 x 0.5 x 1.0mm) and replaceable Viton® O-ring

Part Number	Pneurop	A	B	C	D	E
XTR16-5-0063	NW16	9.5	5	17	-	-
XTR25-5-0064	NW25	19.5	5	26	-	-
XTR40-5-0065	NW40	32	5	41	-	-
XTR50-5-0066	NW50	43	5	52	-	-

Pressure range 10<sup>-7</sup> mbar to 1 bar

Temperature range -10 to 200°C (Sustained 150°C)



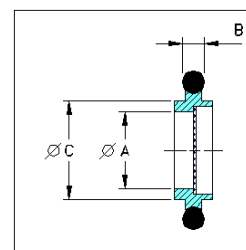
## KF MESH CENTERING RINGS, NITRILE O-RINGS

Stainless steel centering ring with 72 mesh screen (0.5 x 0.5 x 1.0mm) and replaceable Viton® O-ring

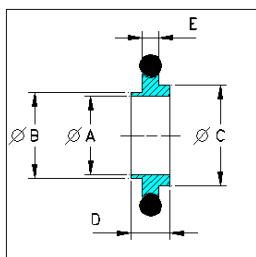
Part Number	Pneurop	A	B	C	D	E
XTR16-5-0067	NW16	9.5	5	17	-	-
XTR25-5-0068	NW25	19.5	5	26	-	-
XTR40-5-0069	NW40	32	5	41	-	-
XTR50-5-0070	NW50	43	5	52	-	-

Pressure range 10<sup>-7</sup> mbar to 1 bar

Temperature range -10 to 100°C



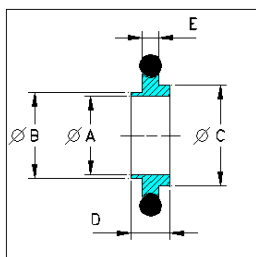
## KF ST. ST. REDUCING CENTERING RINGS, VITON® O-RING



Part Number	Pneurop	A	B	C	D	E
XTR10/16-6-0071	NW10/16	10	12	17	8	3.9
XTR20/25-6-0072	NW20/25	20	22	26	8	3.9
XTR32/40-6-0073	NW32/40	32	34	41	8	3.9

Pressure range  $10^{-7}$  mbar to 1 bar  
 Temperature range -10 to 200°C (Sustained 150°C)

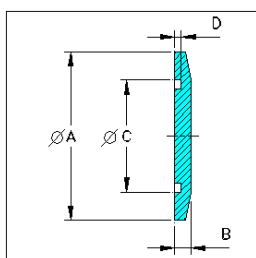
## KF St. St. REDUCING CENTERING RINGS, NITRILE O-RING



Part Number	Pneurop	A	B	C	D	E
XTR10/16-6-0074	NW10/16	10	12	17	8	3.9
XTR20/25-6-0075	NW20/25	20	22	26	8	3.9
XTR32/40-6-0076	NW32/40	32	34	41	8	3.9

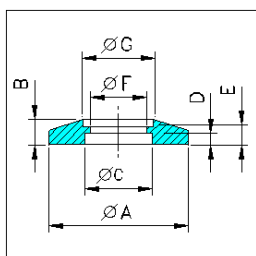
Pressure range  $10^{-7}$  mbar to 1 bar  
 Temperature range -10 to 100°C

## KF BLANK FLANGES – STAINLESS STEEL



Part Number	Pneurop	A	B	C	D	E
XTR10-6-0077	NW10	30	6	12.2	2.5	-
XTR16-6-0078	NW16	30	6	17.2	2.5	-
XTR20-6-0079	NW20	40	6	22.2	2.5	-
XTR25-6-0080	NW25	40	6	26.2	2.5	-
XTR32-6-0081	NW32	55	6	34.2	2.5	-
XTR40-6-0082	NW40	55	6	41.2	2.5	-
XTR50-6-0083	NW50	75	6	52.2	2.5	-

## KF BORED FLANGES – STAINLESS STEEL

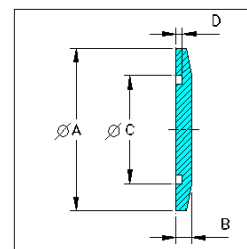


Part Number	Pneurop	A	B	C	D	E	F	G
XTR10-6-0084	NW10	30	5.1	12.2	2.5	4.0	10	14.0
XTR16-6-0085	NW16	30	4.3	17.2	2.5	3.3	16	20.0
XTR25-6-0086	NW25	40	4.6	26.2	2.5	3.5	24	28.0
XTR40-6-0087	NW40	55	4.4	41.2	2.5	3.3	41	44.5
XTR50-6-0088	NW50	75	5.4	52.2	2.5	4.4	51	57.0

Special bores available on request

## KF BLANK FLANGES ALUMINIUM

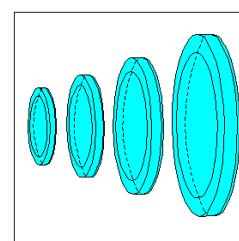
Part Number	Pneurop	A	B	C	D	E
XTR10-7-0089	NW10	30	6	12.2	2.5	-
XTR16-7-0090	NW16	30	6	17.2	2.5	-
XTR20-7-0091	NW20	40	6	22.2	2.5	-
XTR25-7-0092	NW25	40	6	26.2	2.5	-
XTR32-7-0093	NW32	55	6	34.2	2.5	-
XTR40-7-0094	NW40	55	6	41.2	2.5	-
XTR50-7-0095	NW50	75	6	52.2	2.5	-



## KF FLANGE CAPS

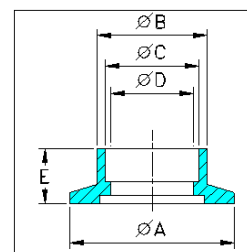
Plastic protective covers

Part Number	Pneurop	Pack Size	B	C	D	E
XTR16-7-0096	NW10/16	10	-	-	-	-
XTR25-7-0097	NW25	10	-	-	-	-
XTR40-7-0098	NW40	10	-	-	-	-
XTR50-7-0099	NW50	10	-	-	-	-



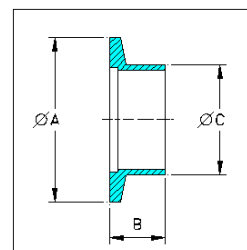
## KF WELD SOCKETS – STAINLESS STEEL

Part Number	Pneurop	A	B	C	D	E
XTR16-7-0100	NW16	30	15.5	13.0	11.4	12.7
XTR16-7-0101	NW16	30	22.1	19.3	17.3	12.7
XTR25-7-0102	NW25	40	28.6	25.9	22.1	12.7
XTR40-7-0103	NW40	55	44.5	38.6	34.9	12.7
XTR50-7-0104	NW50	75	57.2	51.3	47.5	12.7



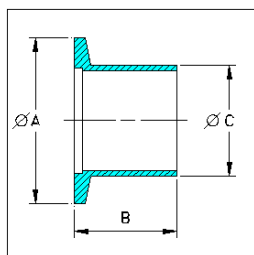
## KF TUBULATIONS (Half Nipples), SHORT – STAINLESS STEEL

Part Number	Pneurop	A	B	C	D	E
XTR10-7-0105	NW10	30	30.0	14.0	-	-
XTR16-7-0106	NW16	30	30.0	20.0	-	-
XTR25-7-0107	NW25	40	30.0	28.0	-	-
XTR40-7-0108	NW40	55	30.0	44.5	-	-
XTR50-7-0109	NW50	75	30.0	57.0	-	-
XTR10-7-0110	NW10	30	12.7	12.7	-	-
XTR16-7-0111	NW16	30	12.7	19.1	-	-
XTR25-7-0112	NW25	40	12.7	25.4	-	-
XTR40-7-0113	NW40	55	19.0	38.1	-	-
XTR50-7-0114	NW50	75	19.0	50.8	-	-



Special lengths and dimensions on request

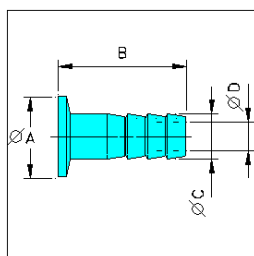
## KF TUBULATIONS (Half Nipples), LONG – STAINLESS STEEL



Part Number	Pneurop	A	B	C	D	E
XTR10-8-0115	NW10	30	70	14.0	-	-
XTR16-8-0116	NW16	30	70	20.0	-	-
XTR25-8-0117	NW25	40	70	28.0	-	-
XTR40-8-0118	NW40	55	70	44.5	-	-
XTR50-8-0118X	NW50	75	70	57.0	-	-
XTR10-8-0119	NW10	30	40	12.7	-	-
XTR16-8-0120	NW16	30	40	19.1	-	-
XTR25-8-0121	NW25	40	40	25.4	-	-
XTR40-8-0122	NW40	55	40	38.1	-	-
XTR50-8-0123	NW50	75	40	50.8	-	-

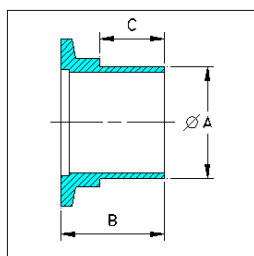
Special lengths and diameters available on request

## KF HOSE NOZZLES – STAINLESS STEEL



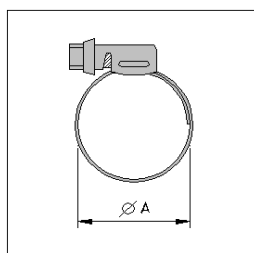
Part Number	Pneurop	A	B	C	D	E
XTR10-8-0124	NW10	30	40	12	7	-
XTR16-8-0125	NW16	30	40	12	8	-
XTR25-8-0126	NW25	40	40	12	7	-
XTR40-8-0127	NW40	55	40	12	7	-

## KF TUBULATIONS FOR PVC HOSE – STAINLESS STEEL



Part Number	Pneurop	A	B	C	D	E
XTR10-8-0129	NW10	12.7	32.0	20.0	-	-
XTR16-8-0130	NW16	12.7	32.0	20.0	-	-
XTR16-8-0131	NW16	19.1	32.0	20.0	-	-
XTR25-8-0132	NW25	25.4	38.1	26.0	-	-
XTR40-8-0133	NW40	38.1	50.0	38.1	-	-
XTR50-8-0134	NW50	50.8	55.0	41.0	-	-

## KF HOSE CLAMPS



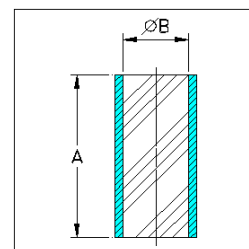
Part Number	Pneurop	A	B	C	D	E
XTR16-8-0135	NW10/16	25	-	-	-	-
XTR25-8-0136	NW25	36	-	-	-	-
XTR40-8-0137	NW40	50	-	-	-	-
XTR50-8-0138	NW50	60	-	-	-	-



## WIRE REINFORCED PVC HOSE

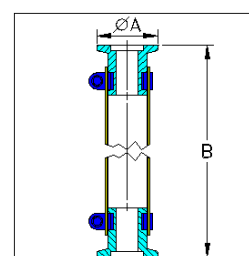
Part Number	Pneurop	A	B*	C	D	E
XTR16-9-0139	NW16	1000	3/4"	-	-	-
XTR25-9-0140	NW25	1000	1"	-	-	-
XTR40-9-0141	NW40	1000	1 1/2"	-	-	-
XTR50-9-0142	NW50	1000	2"	-	-	-

\*Nominal bore



## KF HOSE CONNECTION – PVC/STAINLESS STEEL

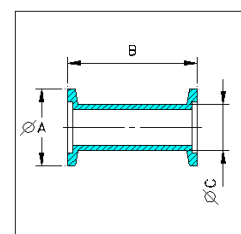
Part Number	Pneurop	A	B	C	D	E
XTR16-9-0143	NW16	30	250	-	-	-
XTR16-9-0144	NW16	30	500	-	-	-
XTR16-9-0145	NW16	30	1000	-	-	-
XTR25-9-0146	NW25	40	250	-	-	-
XTR25-9-0147	NW25	40	500	-	-	-
XTR25-9-0148	NW25	40	1000	-	-	-
XTR40-9-0149	NW40	55	250	-	-	-
XTR40-9-0150	NW40	55	500	-	-	-
XTR40-9-0151	NW40	55	1000	-	-	-
XTR50-9-0152	NW50	75	250	-	-	-
XTR50-9-0153	NW50	75	500	-	-	-
XTR50-9-0154	NW50	75	1000	-	-	-



## KF STRAIGHT CONNECTORS – STAINLESS STEEL

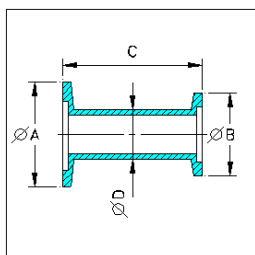
Part Number	Pneurop	A	B	C*	D	E
XTR10-9-0155	NW10	30	60	14.0	-	-
XTR16-9-0156	NW16	30	80	20.0	-	-
XTR25-9-0157	NW25	40	100	28.0	-	-
XTR40-9-0158	NW40	55	130	44.5	-	-
XTR50-9-0159	NW50	75	140	57.0	-	-

Special lengths on request



XTR-702, -704, -705 Silicon Fluids

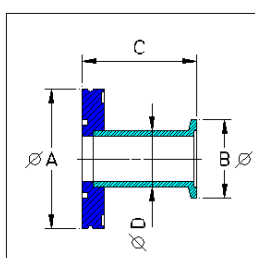
## KF TUBULATIONS REDUCING ADAPTOR – STAINLESS STEEL



Part Number	Pneurop	A	B	C	D*	E
XTR16-10-0160	NW16/10	30	30	28	14.0	-
XTR25-10-0161	NW25/10	40	30	28	14.0	-
XTR40-10-0162	NW40/10	55	30	28	14.0	-
XTR25-10-0163	NW25/16	40	30	28	20.0	-
XTR40-10-0164	NW40/16	55	30	28	20.0	-
XTR50-10-0165	NW50/16	75	30	28	20.0	-
XTR40-10-0166	NW40/25	55	40	28	28.0	-
XTR50-10-0167	NW50/25	75	40	28	28.0	-
XTR50-10-0168	NW50/40	75	55	28	44.5	-

Special lengths available on request

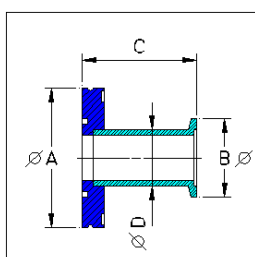
## CF TO KF TUBULATED ADAPTORS – STAINLESS STEEL



Part Number	CF / KF	A	B	C	D*	E
XTR1610-10-0169	NW16CF/KF10	34	30	36	14.0	-
XTR1616-10-0170	NW16CF/KF16	34	30	36	20.0	-
XTR3510-10-0171	NW35CF/KF10	70	30	36	14.0	-
XTR3516-10-0172	NW35CF/KF16	70	30	36	20.0	-
XTR3525-10-0173	NW35CF/KF25	70	40	36	28.0	-
XTR3540-10-0174	NW35CF/KF40	70	55	50	44.5	-
XTR6325-10-0175	NW63CF/KF25	114	40	50	28.0	-
XTR6340-10-0176	NW63CF/KF40	114	55	50	44.5	-
XTR6350-10-0177	NW63CF/KF50	114	75	50	57.0	-
XTR1025-10-0178	NW100CF/KF25	152	40	50	28.0	-
XTR1040-10-0179	NW100CF/KF40	152	55	50	44.5	-
XTR1050-10-0180	NW100CF/KF50	152	75	50	57.0	-
XTR1525-10-0181	NW150CF/KF25	203	40	70	28.0	-
XTR1540-10-0182	NW150CF/KF40	203	55	70	44.5	-
XTR1550-10-0183	NW150CF/KF50	203	75	70	57.0	-

Special lengths available on request

## ISO TO KF TUBULATIONS ADAPTOR – STAINLESS STEEL



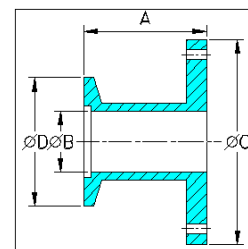
Part Number	ISO / KF	A	B	C	D*	E
XTR6325-10-0184	IS063/KF25	95	40	50	28	-
XTR6340-10-0185	IS063/KF40	95	55	50	44.5	-
XTR1040-10-0186	IS0100/KF40	130	55	50	44.5	-
XTR8040-10-0187	IS080/KF40	110	55	118	44.5	-
XTR6350-10-0188	IS063/KF50	95	75	50	57	-
XTR8050-10-0189	IS080/KF50	110	75	118	57	-
XTR1050-10-0190	IS0100/KF50	130	75	50	57	-

Special lengths available on request

\*Typical, varies with tube availability

## ISO BOLTED TO KF ADAPTOR – STAINLESS STEEL

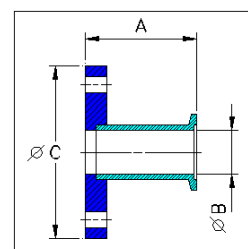
Part Number	ISO / KF	A	B	C	D	E
XTR4050-11-0191	ISO40/KF50	50	41	100	75	-



## KF TO ASA TUBULATED ADAPTORS – STAINLESS STEEL

Without O-ring groove

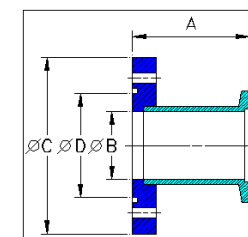
Part Number	Pneuop	A	B	C	D	ASA
XTR4038-11-0192	NW40	46	40	127	-	1½"
XTR4050-11-0193	NW40	46	40	152	-	2"
XTR4075-11-0194	NW40	46	40	191	-	3"
XTR5038-11-0195	NW50	46	50	127	-	1½"
XTR5050-11-0196	NW50	46	50	152	-	2"
XTR5075-11-0197	NW50	46	50	191	-	3"



## KF TO ASA TUBULATED ADAPTORS – STAINLESS STEEL

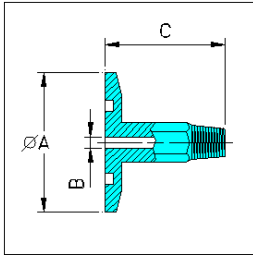
With O-ring groove

Part Number	Pneuop	A	B	C	D	ASA
XTR4050-11-0198	NW40	46	40	152	88.5	2"
XTR4075-11-0199	NW40	46	40	191	114.5	3"
XTR5050-11-0200	NW50	46	50	152	88.5	2"
XTR5075-11-0201	NW50	46	50	191	114.5	3"



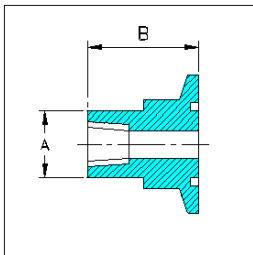
High Vacuum Sputter Magnetrons

## KF TO MALE NPT PIPE ADAPTORS – STAINLESS STEEL



Part Number	Pneurop	A	B	C	D	NPT
XTR163-12-0202	NW16	30	4.7	40	-	1/8"
XTR166-12-0203	NW16	30	7.1	50	-	1/4"
XTR253-12-0204	NW25	40	4.7	40	-	1/8"
XTR256-12-0205	NW25	40	7.1	50	-	1/4"
XTR2513-12-0206	NW25	40	11.9	75	-	1/2"
XTR2519-12-0207	NW25	40	15.9	75	-	3/4"
XTR406-12-0208	NW40	55	7.1	50	-	1/4"
XTR4013-12-0209	NW40	55	11.9	75	-	1/2"
XTR4019-12-0210	NW40	55	15.9	75	-	3/4"
XTR4025-12-0211	NW40	55	22.2	75	-	1"
XTR506-12-0212	NW50	75	7.1	50	-	1/4"
XTR5013-12-0213	NW50	75	11.9	75	-	1/2"
XTR5019-12-0214	NW50	75	15.9	75	-	3/4"
XTR5025-12-0215	NW50	75	22.2	75	-	1"

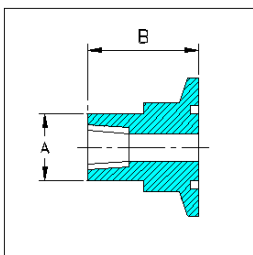
## KF TO FEMALE NPT PIPE ADAPTORS – STAINLESS STEEL



Part Number	Pneurop	A	B	C	D	NPT
XTR103-12-0216	NW10	15.8	19.1	-	-	1/8"
XTR163-12-0217	NW16	15.8	19.1	-	-	1/8"
XTR253-12-0218	NW25	22.4	19.1	-	-	1/8"
XTR403-12-0219	NW40	31.8	25.4	-	-	1/8"
XTR503-12-0220	NW50	44.5	25.4	-	-	1/8"
XTR106-12-0221	NW10	15.8	19.1	-	-	1/4"
XTR166-12-0222	NW16	15.8	19.1	-	-	1/4"
XTR256-12-0223	NW25	22.4	19.1	-	-	1/4"
XTR406-12-0224	NW40	31.8	25.4	-	-	1/4"
XTR506-12-0225	NW50	44.5	25.4	-	-	1/4"

A = Across flats

## KF TO FEMALE NPT PIPE ADAPTORS – ALUMINIUM

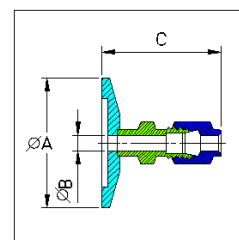


Part Number	ISO / KF	A	B	C	D	NPT
XTR103-12-0226	NW10	15.8	19.1	-	-	1/8"
XTR163-12-0227	NW16	15.8	19.1	-	-	1/8"
XTR253-12-0228	NW25	22.4	19.1	-	-	1/8"
XTR403-12-0229	NW40	31.8	25.4	-	-	1/8"
XTR503-12-0230	NW50	44.5	25.4	-	-	1/8"
XTR106-12-0231	NW10	15.8	19.1	-	-	1/4"
XTR166-12-0232	NW16	15.8	19.1	-	-	1/4"
XTR256-12-0233	NW25	22.4	19.1	-	-	1/4"
XTR406-12-0234	NW40	31.8	25.4	-	-	1/4"
XTR506-12-0235	NW50	44.5	25.4	-	-	1/4"

A = Across flats

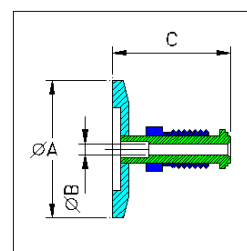
## KF TO VCR® FEMALE ADAPTORS – STAINLESS STEEL

Part Number	Pneurop	A	B	C	D	VCR
XTR166-13-0236	NW16	30	4.8	35.6	-	1/4"
XTR1613-13-0237	NW16	30	10.4	40.5	-	1/2"
XTR256-13-0238	NW25	40	4.8	35.6	-	1/4"
XTR2513-13-0239	NW25	40	10.4	40.6	-	1/2"
XTR2519-13-0240	NW25	40	15.7	54.4	-	3/4"
XTR406-13-0241	NW40	55	4.8	35.6	-	1/4"
XTR4013-13-0242	NW40	55	10.4	40.6	-	1/2"
XTR4019-13-0243	NW40	55	15.7	53.3	-	3/4"
XTR506-13-0244	NW50	75	4.8	35.6	-	1/4"
XTR5013-13-0245	NW50	75	10.4	40.6	-	1/2"
XTR5019-13-0246	NW50	75	15.7	53.3	-	3/4"



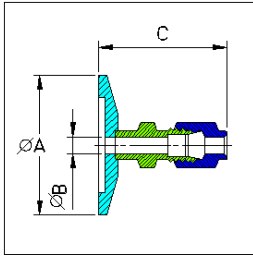
## KF TO VCR® MALE ADAPTORS – STAINLESS STEEL

Part Number	Pneurop	A	B	C	D	VCR
XTR166-13-0247	NW16	30	4.8	35.6	-	1/4"
XTR1613-13-0248	NW16	30	10.4	41.4	-	1/2"
XTR256-13-0249	NW25	40	4.8	35.6	-	1/4"
XTR2513-13-0250	NW25	40	10.4	40.6	-	1/2"
XTR2519-13-0251	NW25	40	15.7	54.4	-	3/4"
XTR406-13-0252	NW40	55	4.8	35.6	-	1/4"
XTR4013-13-0253	NW40	55	10.4	40.6	-	1/2"
XTR4019-13-0254	NW40	55	15.7	53.3	-	3/4"
XTR506-13-0255	NW50	75	4.8	35.6	-	1/4"
XTR5013-13-0256	NW50	75	10.4	40.6	-	1/2"
XTR5019-13-0257	NW50	75	15.7	53.3	-	3/4"



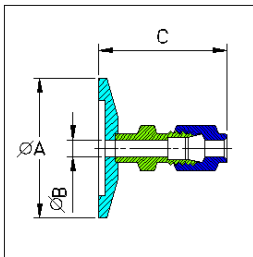
Sputter Targets & Evaporation Materials

## KF TO METRIC PIPE ADAPTORS – STAINLESS STEEL



Part Number	Pneurop	A	B	C	D	To Fit Tube
XTR164-14-0258	NW16	30	2.4	35	-	4 mm
XTR166-14-0259	NW16	30	4.8	37	-	6 mm
XTR168-14-0260	NW16	30	6.4	38	-	8 mm
XTR1610-14-0261	NW16	30	7.9	45	-	10 mm
XTR1612-14-0262	NW16	30	9.5	47	-	12 mm
XTR1616-14-0263	NW16	30	9.1	53	-	16 mm
XTR254-14-0264	NW25	40	2.4	35	-	4 mm
XTR256-14-0265	NW25	40	4.8	37	-	6 mm
XTR258-14-0266	NW25	40	6.4	38	-	8 mm
XTR2510-14-0267	NW25	40	7.9	45	-	10 mm
XTR2513-14-0268	NW25	40	9.5	47	-	12 mm
XTR2516-14-0269	NW25	40	9.1	53	-	16 mm
XTR404-14-0270	NW40	55	2.4	35	-	4 mm
XTR406-14-0271	NW40	55	4.8	37	-	6 mm
XTR408-14-0272	NW40	55	6.4	38	-	8 mm
XTR4010-14-0273	NW40	55	7.9	45	-	10 mm
XTR4012-14-0274	NW40	55	9.5	47	-	12 mm
XTR4016-14-0275	NW40	55	9.1	53	-	16 mm

## KF TO IMPERIAL PIPE ADAPTORS – STAINLESS STEEL

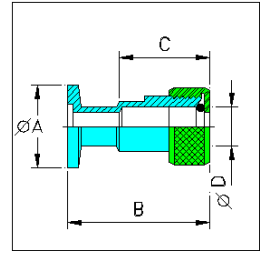


Part Number	Pneurop	A	B	C	D	To Fit Tube
XTR163-14-0276	NW16	30	2.3	31	-	1/8"
XTR167-14-0277	NW16	30	4.8	38	-	1/4"
XTR169-14-0278	NW16	30	7.1	40	-	3/8"
XTR1613-14-0279	NW16	30	10.4	53	-	1/2"
XTR253-14-0280	NW25	40	2.3	34	-	1/8"
XTR257-14-0281	NW25	40	4.8	38	-	1/4"
XTR259-14-0282	NW25	40	7.1	40	-	3/8"
XTR2513-14-0283	NW25	40	10.4	53	-	1/2"
XTR2519-14-0284	NW25	40	15.7	54	-	3/4"
XTR2525-14-0285	NW25	40	22.3	66	-	1"
XTR403-14-0286	NW40	55	2.3	34	-	1/8"
XTR407-14-0287	NW40	55	4.8	36	-	1/4"
XTR409-14-0288	NW40	55	7.1	40	-	3/8"
XTR4013-14-0289	NW40	55	10.4	53	-	1/2"
XTR4019-14-0290	NW40	55	15.7	54	-	3/4"
XTR4025-14-0291	NW40	55	22.3	66	-	1"

KF to BSP adaptors available on request

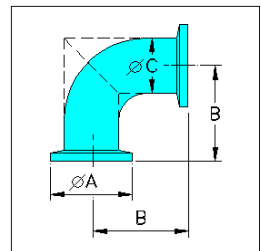
## KF COMPRESSION FIT TUBING ADAPTORS – STAINLESS STEEL

Part Number	Pneurop	A	B	C	D	Tube Size
XTR10-15-0292	NW10	30	50	33	13.1	12.7
XTR16-15-0293	NW16	30	32	-	6.7	6.4
XTR16-15-0294	NW16	30	50	33	13.1	12.7
XTR16-15-0295	NW16	30	56	40	19.4	19.1
XTR25-15-0296	NW25	40	50	33	13.1	12.7
XTR25-15-0297	NW25	40	58	40	19.4	19.1
XTR25-15-0298	NW25	40	62	46	25.8	25.4
XTR40-15-0299	NW40	55	58	33	13.1	12.7
XTR40-15-0300	NW40	55	63.5	40	19.4	19.1
XTR40-15-0301	NW40	55	71	46	25.8	25.4
XTR40-15-0302	NW40	55	74	49	29	28.6
XTR40-15-0303	NW40	55	84	63.5	38.4	38.1
XTR50-15-0304	NW50	75	63.5	40	19.4	19.1
XTR50-15-0305	NW50	75	71	46	25.8	25.4
XTR50-15-0306	NW50	75	74	49	29	28.6
XTR50-15-0307	NW50	75	87	63.5	38.4	38.1
XTR50-15-0308	NW50	75	87	66	51.1	50.8



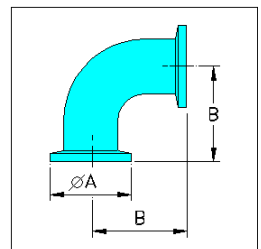
## KF ELBOWS – STAINLESS STEEL

Part Number	Pneurop	A	B	C*	D	E
XTR10-15-0309	NW10	30	30	14	-	-
XTR16-15-0310	NW16	30	40	20	-	-
XTR25-15-0311	NW25	40	50	28	-	-
XTR40-15-0312	NW40	55	65	45	-	-
XTR50-15-0313	NW50	75	70	57	-	-



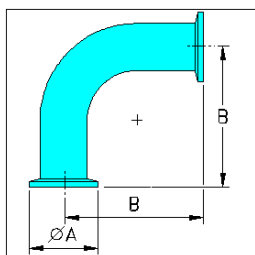
## KF ELBOWS – ALUMINIUM

Part Number	Pneurop	A	B	C	D	E
XTR10-15-0314	NW10	30	30	-	-	-
XTR16-15-0315	NW16	30	40	-	-	-
XTR25-15-0316	NW25	40	50	-	-	-
XTR40-15-0317	NW40	55	65	-	-	-



\*Typical, varies with tube availability

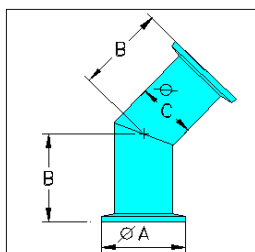
## KF LONG RADIUS ELBOWS – STAINLESS STEEL



Part Number	Pneuop	A	B	C	D	E
XTR40-16-0318	NW40	55	130	-	-	-
XTR50-16-0319	NW50	75	140	-	-	-

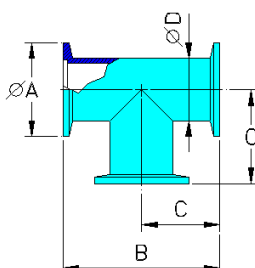
Specials available on request

## KF 45° BENDS – STAINLESS STEEL



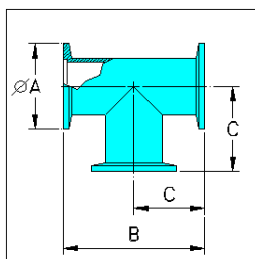
Part Number	Pneuop	A	B	C*	D	E
XTR410-16-0320	NW10	30	30	14	-	-
XTR416-16-0321	NW16	30	23.2	20	-	-
XTR425-16-0322	NW25	40	28.5	28	-	-
XTR440-16-0323	NW40	55	42.7	45	-	-
XTR450-16-0324	NW50	75	50.6	57	-	-

## KF TEES – STAINLESS STEEL



Part Number	Pneuop	A	B	C	D*	E
XTR10-16-0325	NW10	30	60	30	14	-
XTR16-16-0326	NW16	30	80	40	20	-
XTR25-16-0327	NW25	40	100	50	28	-
XTR40-16-0328	NW40	55	130	65	45	-
XTR50-16-0329	NW50	75	140	70	57	-

## KF TEES - ALUMINIUM



Part Number	Pneuop	A	B	C	D	E
XTR10-16-0330	NW10	30	30	60	-	-
XTR16-16-0331	NW16	30	40	80	-	-
XTR25-16-0332	NW25	40	50	100	-	-
XTR40-16-0333	NW40	55	65	130	-	-

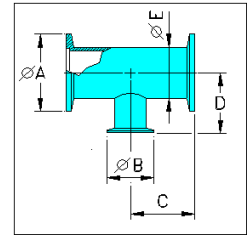
\*Typical, varies with tube availability



## KF UNEQUAL TEES – STAINLESS STEEL

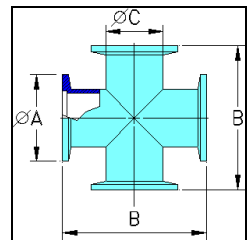
Part Number	Pneurop	A	B	C	D	E*
XTR2510-17-0334	NW25/10	40	30	50	40	28
XTR2516-17-0335	NW25/16	40	30	50	40	28
XTR4016-17-0336	NW40/16	55	30	65	40	45
XTR4025-17-0337	NW40/25	55	40	65	50	45
XTR5016-17-0338	NW50/16	75	30	70	50	57
XTR5025-17-0339	NW50/25	75	40	70	65	57
XTR5040-17-0340	NW50/40	75	55	70	65	57

For ISO to KF reducing tees see page 42



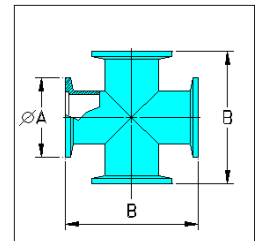
## KF 4-WAY CROSSES – STAINLESS STEEL

Part Number	Pneurop	A	B	C*	D	E
XTR10-17-0341	NW10	30	60	14	-	-
XTR16-17-0342	NW16	30	80	20	-	-
XTR25-17-0343	NW25	40	100	28	-	-
XTR40-17-0344	NW40	55	130	45	-	-
XTR50-17-0345	NW50	75	149	57	-	-



## KF 4-WAY CROSSES – ALUMINIUM

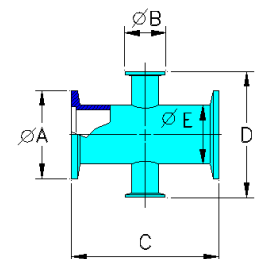
Part Number	Pneurop	A	B	C	D	E
XTR10-17-0346	NW10	30	60	-	-	-
XTR16-17-0347	NW16	30	80	-	-	-
XTR25-17-0348	NW25	40	100	-	-	-
XTR40-17-0349	NW40	55	130	-	-	-



## KF REDUCING 4-WAY CROSSES – STAINLESS STEEL

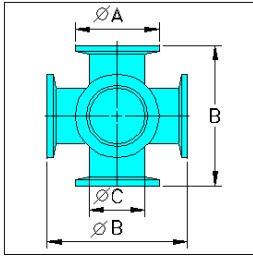
Part Number	Pneurop	A	B	C	D	E*
XTR25-17-0350	NW25/10	40	30	70	70	28
XTR25-17-0351	NW25/16	40	30	100	80	28
XTR40-17-0352	NW40/10	55	30	80	90	45
XTR40-17-0353	NW40/16	55	30	130	80	45
XTR40-17-0354	NW40/25	55	40	130	100	45
XTR50-17-0355	NW50/25	75	40	140	100	57
XTR50-17-0356	NW50/40	75	55	140	130	57

For ISO to KF reducing tees see page 43



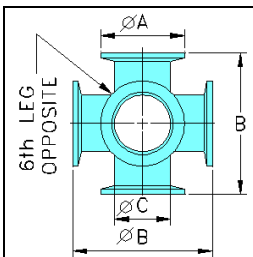
\*Typical, varies with tube availability

## KF 5-WAY CROSSES – STAINLESS STEEL



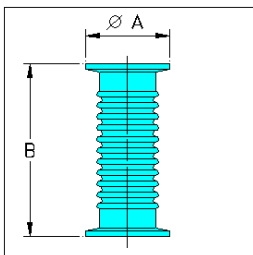
Part Number	Pneuop	A	B	C*	D	E
XTR16-18-0357	NW16	30	80	20	-	-
XTR25-18-0358	NW25	40	100	28	-	-
XTR40-18-0359	NW40	55	130	45	-	-

## KF 6-WAY CROSSES – STAINLESS STEEL



Part Number	Pneuop	A	B	C*	D	E
XTR16-18-0360	NW16	30	80	20	-	-
XTR25-18-0361	NW25	40	100	28	-	-
XTR40-18-0362	NW40	55	130	45	-	-

## KF FLEXIBLE HOSES – STAINLESS STEEL



Used to overcome misalignment. Special lengths available on request.

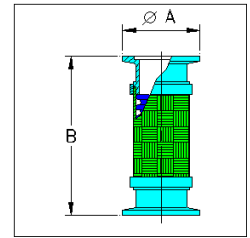
Part Number	Pneuop	A	B	C	D	E
XTR10-18-0363	NW10	30	250	-	-	-
XTR10-18-0364	NW10	30	500	-	-	-
XTR10-18-0365	NW10	30	750	-	-	-
XTR10-18-0366	NW10	30	1000	-	-	-
XTR16-18-0367	NW16	30	250	-	-	-
XTR16-18-0368	NW16	30	500	-	-	-
XTR16-18-0369	NW16	30	750	-	-	-
XTR16-18-0370	NW16	30	1000	-	-	-
XTR25-18-0371	NW25	40	250	-	-	-
XTR25-18-0372	NW25	40	500	-	-	-
XTR25-18-0373	NW25	40	750	-	-	-
XTR25-18-0374	NW25	40	1000	-	-	-
XTR40-18-0375	NW40	55	250	-	-	-
XTR40-18-0376	NW40	55	500	-	-	-
XTR40-18-0377	NW40	55	750	-	-	-
XTR40-18-0378	NW40	55	1000	-	-	-
XTR50-18-0379	NW50	75	250	-	-	-
XTR50-18-0380	NW50	75	500	-	-	-
XTR50-18-0381	NW50	75	750	-	-	-
XTR50-18-0382	NW50	75	1000	-	-	-

\*Typical, varies with tube available

## KF BRAIDED FLEXIBLE HOSES – STAINLESS STEEL

Used for exhaust pipelines involving high pressure

Part Number	Pneurop	A	B	C	D	E
XTR25-19-0383	NW25	40	135	-	-	-
XTR25-19-0384	NW25	40	250	-	-	-
XTR25-19-0385	NW25	40	500	-	-	-
XTR25-19-0386	NW25	40	1000	-	-	-
XTR40-19-0387	NW40	55	135	-	-	-
XTR40-19-0388	NW40	55	250	-	-	-
XTR40-19-0389	NW40	55	500	-	-	-
XTR40-19-0390	NW40	55	1000	-	-	-
XTR50-19-0391	NW50	75	135	-	-	-
XTR50-19-0392	NW50	75	250	-	-	-
XTR50-19-0393	NW50	75	500	-	-	-
XTR50-19-0394	NW50	75	1000	-	-	-

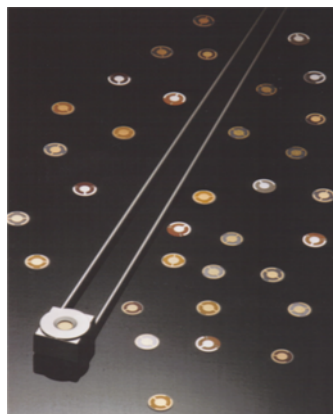
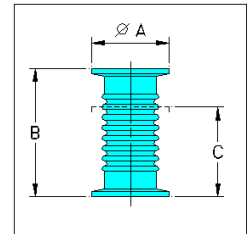


## KF HYDROFORMED BELLOWS CONNECTORS

Used for straight connection between components to minimize the transfer of vibration

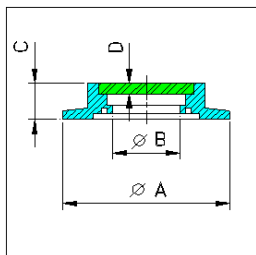
Part Number	Pneurop	A	B	C	D	E
XTR10-19-0395	NW10	30	121	91	-	-
XTR16-19-0396	NW16	30	121	91	-	-
XTR25-19-0397	NW25	40	121	91	-	-
XTR40-19-0398	NW40	55	121	91	-	-
XTR50-19-0399	NW50	75	110	85	-	-

Edge welded bellows available on request



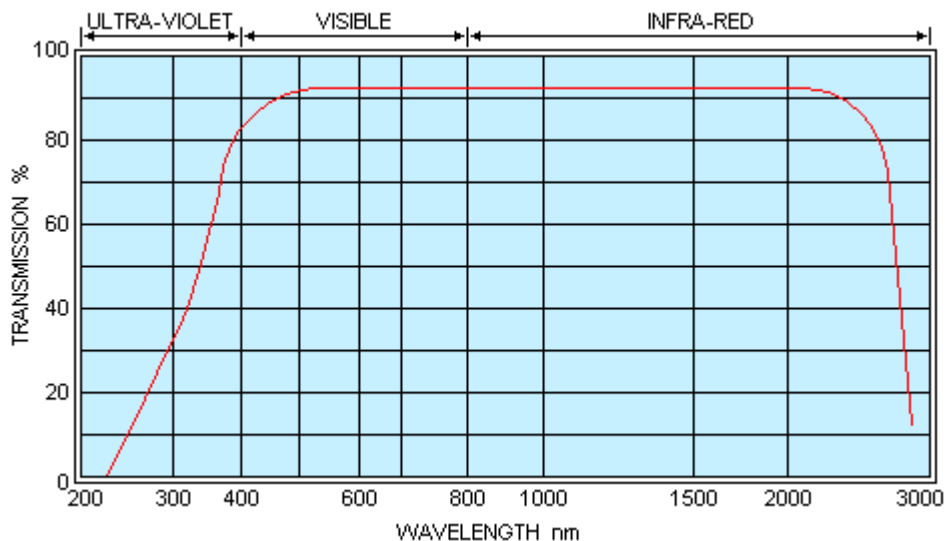
X-TRONIX Quality Quartz Crystals  
for most brands of thin film deposition monitors!

## KF ZERO LENGTH KODIAL VIEWPORTS



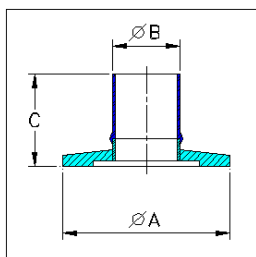
Bakeable to 200°C at not greater than 2-3°C per minute

Part Number	Pneurop	A	B ± 2	C ± 1	D	E
XTR40-20-0400	NW40	50	36	15	2.5	-
XTR50-20-0401	NW50	75	36	15	2.5	-



Kodial transmission curve

## KF KODIAL TUBULATIONS

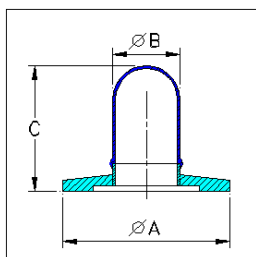


Bakeable to 200°C at not greater than 2-3°C per minute

Part Number	Pneurop	A	B ± 1	C ± 5	D	E
XTR10-20-0402	NW10	30	6	100	-	-
XTR16-20-0403	NW16	30	13	100	-	-
XTR25-20-0404	NW25	40	19	100	-	-
XTR25-20-0405	NW25	40	25	100	-	-
XTR40-20-0406	NW40	55	25	100	-	-
XTR40-20-0407	NW40	55	38	100	-	-

For Pyrex tubulations see page 21

## KF DOMED KODIAL TUBULATIONS



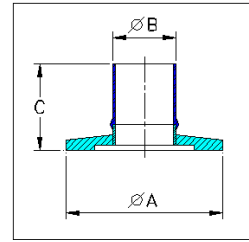
Bakeable to 200°C at not greater than 2-3°C per minute

Part Number	Pneurop	A	B ± 1	C ± 5	D	E
XTR16-20-0408	NW16	30	13	100	-	-
XTR25-20-0409	NW25	40	25	100	-	-
XTR40-20-0410	NW40	55	38	100	-	-

## KF PYREX® TUBULATIONS

Graded seal tubulation terminating in a length of Pyrex bakeable to 200°C at not greater than 2-3°C per minute

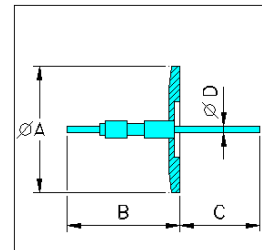
Part Number	Pneurop	A	B ± 1	C ± 5	D	E
XTR16-21-0411	NW10	30	6	100	-	-
XTR16-21-0412	NW16	30	13	100	-	-
XTR16-21-0413	NW25	40	19	100	-	-
XTR16-21-0414	NW25	40	25	100	-	-
XTR16-21-0415	NW40	55	25	100	-	-
XTR16-21-0416	NW40	55	38	100	-	-



## KF INSTRUMENTATION FEEDTHROUGHS

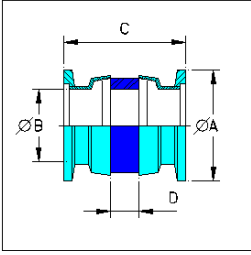
A range of instrumentation feedthroughs containing power and thermocouple feedthroughs. The electrical ratings are 3 amps, 5kV. Conductor types are N = nickel and K = type K thermocouple (Chromel® non-magnetic T1 positive pin NiCr, Alumel® magnetic T2 negative pin NiAlsi Mn)

Part Number	Pneurop	A	B	C	D	No. Type of Conductors
XTR25-21-0417	NW16	30	60	75	1.2	1 x N
XTR25-21-0418	NW16	30	60	75	1.2	2 x N
XTR25-21-0419	NW16	30	1 x 60 1 x 55	1 x 65 1 x 75	1.2	2 x N
XTR25-21-0420	NW16	30	60	75	1.2	4 x N
XTR25-21-0421	NW16	30	2 x 60 2 x 55	2 x 70 2 x 75	1.2	4 x K
XTR40-21-0422	NW16	30	3 x 60 1 x 55	1 x 70 3 x 75	1.2	2 x N 2 x K
XTR40-21-0423	NW25	40	60	75	1.2	2 x N
XTR40-21-0424	NW25	40	1 x 60 1 x 55	1 x 65 1 x 75	1.2	2 x K
XTR40-21-0425	NW25	40	60	75	1.2	4 x N
XTR40-21-0426	NW25	40	2 x 60 2 x 55	2 x 70 2 x 75	1.2	4 x K
XTR10-21-0427	NW25	40	3 x 60 1 x 55	1 x 70 3 x 75	1.2	2 x N 2 x K
XTR16-21-0428	NW40	55	60	75	1.2	2 x N
XTR25-21-0429	NW40	55	1 x 70 1 x 75	1 x 60 1 x 55	1.2	2 x K
XTR25-21-0430	NW40	55	60	75	1.2	4 x N
XTR40-21-0431	NW40	55	2 x 60 2 x 55	2 x 70 2 x 75	1.2	4 x K
XTR40-21-0432	NW40	55	3 x 60 1 x 55	1 x 70 3 x 75	1.2	2 x N 2 x K



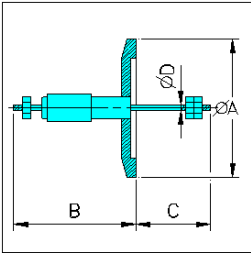
Other thermocouple materials and combinations on request

## KF CERAMIC BREAKS



Part Number	Pneurop	A	B	C	D	kV
XTR16-22-0433	NW16	30	16	92	25	10
XTR25-22-0434	NW25	40	16	92	25	10
XTR40-22-0435	NW40	55	35	62	6	3

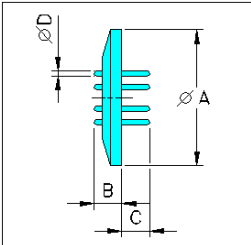
## KF POWER FEEDTHROUGHS



Stainless steel conductors of 40 amp, 15kV rating

Part Number	Pneurop	A	B	C	D	Conductors
XTR16-22-0436	NW16	30	73	62	M5	1
XTR25-22-0437	NW25	40	73	62	M5	1
XTR40-22-0438	NW40	55	73	62	M5	1
XTR40-22-0439	NW40	55	73	62	M5	2
XTR40-22-0440	NW40	55	73	62	M5	4

## KF MULTIPIN CERAMIC FEEDTHROUGHS



Part Number	Pneurop	A	B	C	D	No. Type of Conductors	Amps	kV
XTR10-22-0441	NW40	55	11	9	1	10x Nickel	5	5
XTR12-22-0442	NW40	55	6	12	1	12x Nickel	5	5

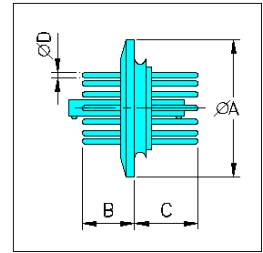
Note, internal & external connectors are available (see socket connectors)



## KF OCTAL BASE FEEDTHROUGHS

Part Number	Pneurop	A	B	C	D	No. Type of Conductors	Amps	kV
XTR1A-23-0443	NW40	55	22	4	2.3	9x Kovar	10	5
XTR1B-23-0444	NW40	55	16	10	2.3	9x Kovar	10	1

The XTR1A-23-0443 has Kovar pins sealed into all the glass base and XTR1B-23-0444 has Kovar pins sealed into a metal base with glass beads. Internal and external connectors are available for both (see socket connectors below). The XTR1B-23-0444 has a KF O-ring carrier machined as part of the flange, so it can be sealed with an O-ring. The XTR1A-23-0443 requires an O-ring and carrier to seal. Both are bakeable to 150°C maximum.

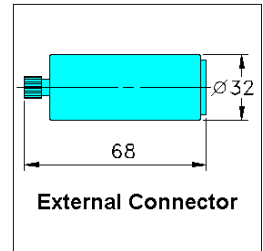


## SOCKET CONNECTORS (INTERNAL & EXTERNAL)

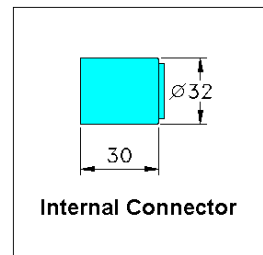
Internal and external connectors for the current range of ceramic and octal base feedthroughs. All connectors have a unique fitting orientation to obviate incorrect wiring connections. All external connectors are bakeable to 250°C and all internal connectors are bakeable to 150°C maximum.

Part Number	Crimp Sockets (No. x IDmm)	Amps	kV	Internal / External	To Fit F/T
XTR12-23-0445	12 x 1.0	5	3	External	XTR12-22-0442
XTR12-23-0446	11 x 1.0*	5	3	Internal	XTR12-22-0442
XTR8-23-0447	8 x 2.3	3	1	External	XTR1A-23-0443 XTR1B-23-0444
XTR8-23-0448	8 x 2.3	3	1	Internal	XTR1A-23-0443 XTR1B-23-0444
XTR10-23-0449	10 x 1.0	5	3	External	XTR10-22-0441
XTR10-23-0450	9 x 1.0*	5	3	Internal	XTR10-22-0441

\*Note: Central pin requires separate flying lead (connector supplied)



**External Connector**

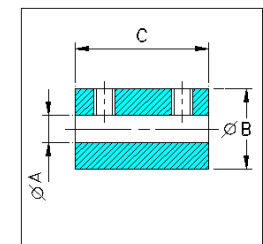


**Internal Connector**

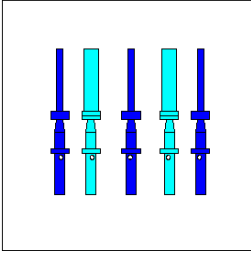
## BARREL CONNECTORS

Supplied in packs of 10 complete with stainless steel screws

Part Number	A	B	C	Screws	Material Barrel
XTR10-23-0451	1.1	4.7	10	2 x Grub	St. St.
XTR23-23-0452	2.4	4.7	10	2 x Grub	St. St.
XTR15-23-0453	1.5	4.7	13	2 x Pan	St. St.
XTR18-23-0454	1.8	4.7	13	2 x Pan	St. St.
XTR30-23-0455	3.0	6.4	14	2 x Pan	St. St.



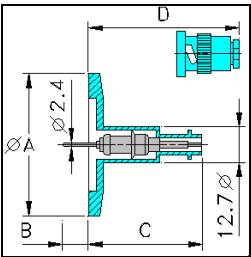
## FEEDTHROUGH CRIMP SETS



Part Number	Bore (mm)	Type	Vacuum Compatible	Pack Qty.
XTR10-24-0456	1.0	Female	Yes	20
XTR10-24-0457	1.0	Male	Yes	20
XTR23-24-0458	2.3	Female	No	20
XTR23-24-0459	2.3	Male	No	20
XTR23-24-0458X	2.3	Female	Yes	20

Note! The non-vacuum compatible crimps should only be used on the atmosphere side of the flange

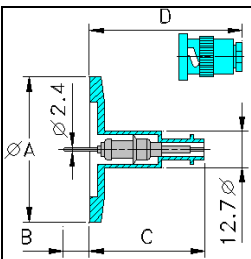
## KF BNC F/T – SINGLE ENDED, GROUNDED SHIELD



Electrical rating 500V DC, 3A. Bakeable to 200°C without connector. Atm side connector supplied

Part Number	Pneurop	A	B	C	D	No. of F/T
XTR16-24-0460	NW16	30	9	35	52	1
XTR25-24-0461	NW25	40	9	35	52	1
XTR40-24-0462	NW40	55	9	35	52	1
XTR40-24-0463	NW40	55	9	35	52	2

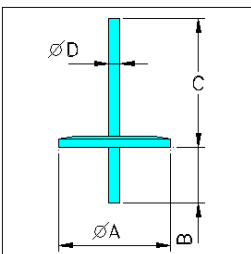
## KF SHV F/T – SINGLE ENDED, GROUNDED SHIELD



These SHV (Safety High Voltage) feedthroughs are rated for high vacuum applications. Safety features included recessed female contacts in cable connectors to reduce possibility of shock and prevent cross mating with BNC components. Electrical rating 5000V DC, 3A. Bakeable to 200°C without connector. Atmosphere side connector supplied

Part Number	Pneurop	A	B	C	D	No of F/T
XTR16-24-0464	NW16	30	8	42	71	1
XTR25-24-0465	NW25	40	8	42	71	1
XTR40-24-0466	NW40	55	8	42	71	1
XTR40-24-0467	NW40	55	8	42	71	2

## KF LIQUID FEEDTHROUGH – STAINLESS STEEL



Part Number	Pneurop	A	B	C	D	Tube Termination
XTR16-24-0468	NW16	30	45	75	6	Plain
XTR40-24-0469	NW40	55	45	75	6	Plain
XTR40-24-0470	NW40	55	73	103	6	6mm fitting

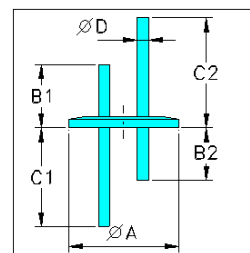
Other flange sizes available on request



## KF 2-WAY LIQUID FEEDTHROUGHS – STAINLESS STEEL

Part Number	Pneurop	A	B1	B2	C1	C2	D	Tube Termination
XTR402-25-0471	NW40	55	45	45	75	75	6	Plain
XTR402-25-0472	NW40	55	73	73	103	103	6	6mm fitting

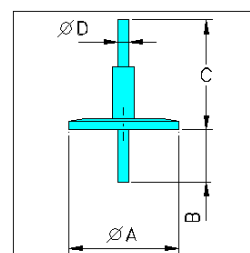
Other flange sizes available on request



## KF LN2 FEEDTHROUGHS – STAINLESS STEEL

Part Number	Pneurop	A	B	C	D	Tube Termination
XTR16-25-0473	NW16	30	45	75	6	Plain
XTR40-25-0474	NW40	55	45	75	12	Plain

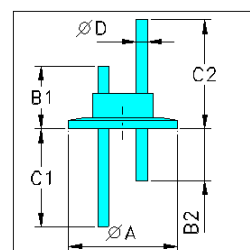
Other flange sizes available on request



## KF 2-WAY LN2 FEEDTHROUGHS – STAINLESS STEEL

Part Number	Pneurop	A	B1	B2	C1	C2	D	Tube Termination
XTR402-25-0475	NW40	55	45	45	75	75	6	Plain
XTR402-25-0476	NW40	55	73	73	103	103	6	6mm fitting

Other flange sizes available on request



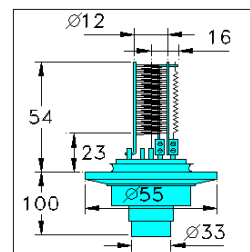
## KF IONISATION GAUGE HEADS

The XTR8-25-0477 ionization gauge head is built on a glass-to-metal sealed base suitable for use in the range  $10^{-3}$  to  $10^{-9}$  mbar. Please see cables / spare filaments page 26.

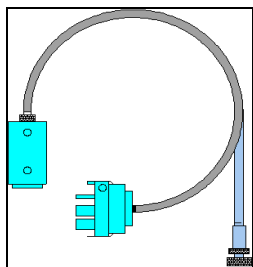
Part Number	Pneurop	Filament Type & No.	Filament Voltage
XTR8-25-0477	NW40	Single, thoriated iridium	8V

Other characteristics are: Collector Voltage -50V; Grid voltage 150V; Sensitivity  $8 \text{ mbar}^{-1}$

► X-TRONIX proposes a complete range of glass Bayard-Alpert and nude UHV ionisation gauges. We supply B-A gauges for 85- 90% of market requirements in this class. Contact us with your brand model replacement needs; chances are we have a 1:1 direct equivalent. We are also a major supplier of rough vacuum gauges, i.e. Thermocouples and Piranis, including to OEM's!



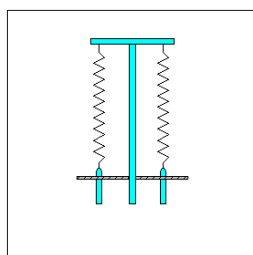
## IONISATION GAUGE CONNECTOR AND LEAD SETS



Part Number	Filament Type	To fit gauge heads
XTR8-26-0478	2m bakeable lead set	XTR8-25-0477
XTR8-26-0479	2m non-bakeable lead set	XTR8-25-0477
XTR8-26-0480	Non-bakeable connector	XTR8-25-0477

Longer leads available on request

## IONISATION GAUGE FILAMENT KITS

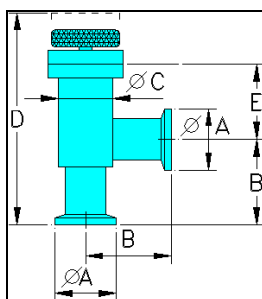


Filaments are supplied in box kits complete with suitable grub screws

Part Number	Filament Type	To fit gauge heads
XTR8-26-0481	Single thoriated iridium	XTR8-25-0477
XTR8-26-0482	Twin helical thoriated iridium	XTR8-25-0477

► X-TRONIX has replacement filaments for most brands of Bayard-Alpert gauges. We also supply filaments for electron beam guns, ion beam sources and for the certain helium leak detectors. Contact us with your requirements.

## KF VITON® SEALED RIGHT ANGLE VALVES - MANUAL

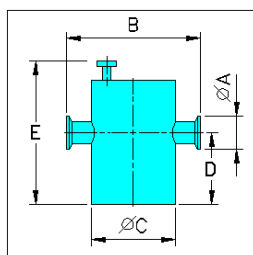


Right angle valves with Viton face seal and demountable metal or welded bonnet seal. Bakeable to 250°C open and 140°C closed. Demountable valves have replacement movement mechanisms.

Part Number	Pneurop	Type	A	B	C	D-closed	D-open†
XTR16-26-0483	NW16	Welded	30	40	20	130	130
XTR16-26-0483X	NW16	Welded	20.0mm tube	37	20	127	127
XTR25-26-0484	NW25	Demountable	40	50	41	140	160
XTR35-26-0485	NW35	Demountable	41.3mm tube	58	41	148	168
XTR40-26-0486	NW40	Demountable	55	65	41	155	175

†where both 'D' dimensions are identical, movement is internal within the valve.

## KF FORELINE TRAPS



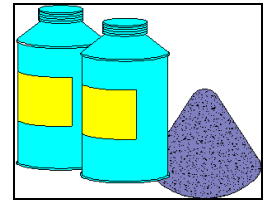
Foreline traps integral heater. Specials and spare cartridge heaters available on request

Part Number	Pneurop	A	B	C	D	E	Sieve Capacity
XTR36-26-0487	NW25	40	230	100	100	170	260g
XTR52-26-0488	NW40	55	230	100	200	340	520g

Pumping speed 260g 300 l/min, 520g 900 l/min.

# KF MOLECULAR SIEVE

Part Number	Sieve Size	Pack Size	Recommended For:
XTR10-27-0489	10 Angstrom	260g	Foreline traps
XTR5-27-0490	5 Angstrom	600g	Sorption pumps

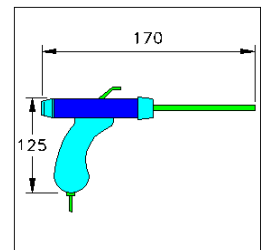


Molecular Sieve

# SPRAY PROBE & LEAK DETECTION MISCELLANEOUS

This precision spray probe is of rugged stainless steel construction and has variable gas flow control to a very low flow rate when a finely controlled jet is required. The handle is manufactured from a tough, chemical resistant plastic and ergonomically shaped for comfortable use. The unit has an on/off button and a mounting point for when not in use. A range of nozzles are available including flexible lengths. The probe can be connected directly to a gas bottle via supplied tubing.

Part Number	Description
XTR1-27-0491	Spray probe, 2m tubing, gas bottle fitting, standard nozzle
XTR1-27-0492	Flexible nozzle attachment
XTR1-27-0493	XTR1-27-0491 + XTR1-27-0493
XTR1-27-0494	Extra long tubing (5 meters)



Calibration Reference Leaks, stainless steel sinter leaks, vacuum sniffer probes and viscous flow sniffer probes available on request.

